



QUILLS

Queen's University Indigenous
Land-Based Learning STEM

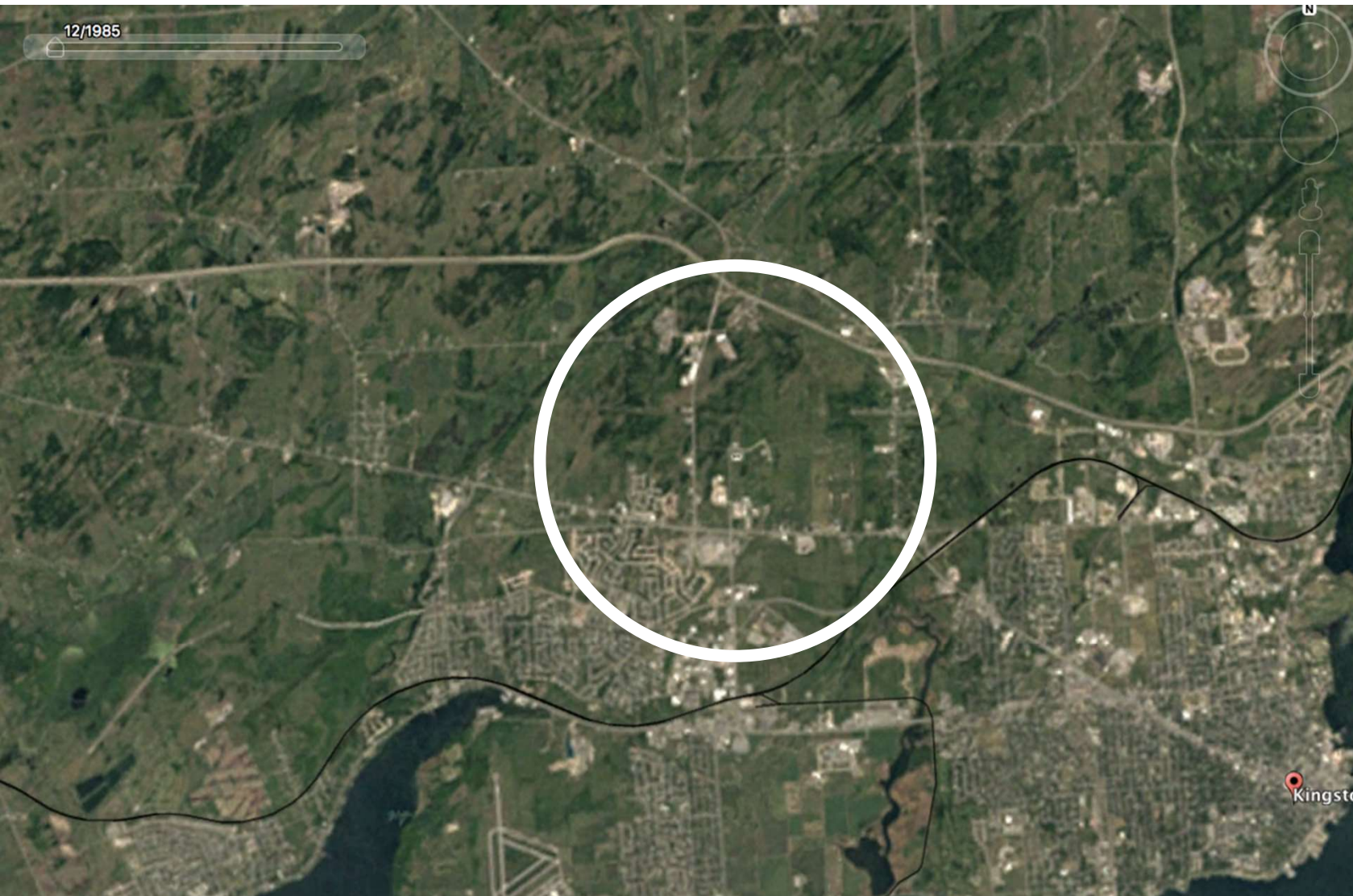
Land Changes Over the Years





In the next slides, you will see images of Kingston, Amherstview, Ottawa and The Queen's University Biological Station. Using the labelled areas, examine how the land changed over the course of 20-30 years.

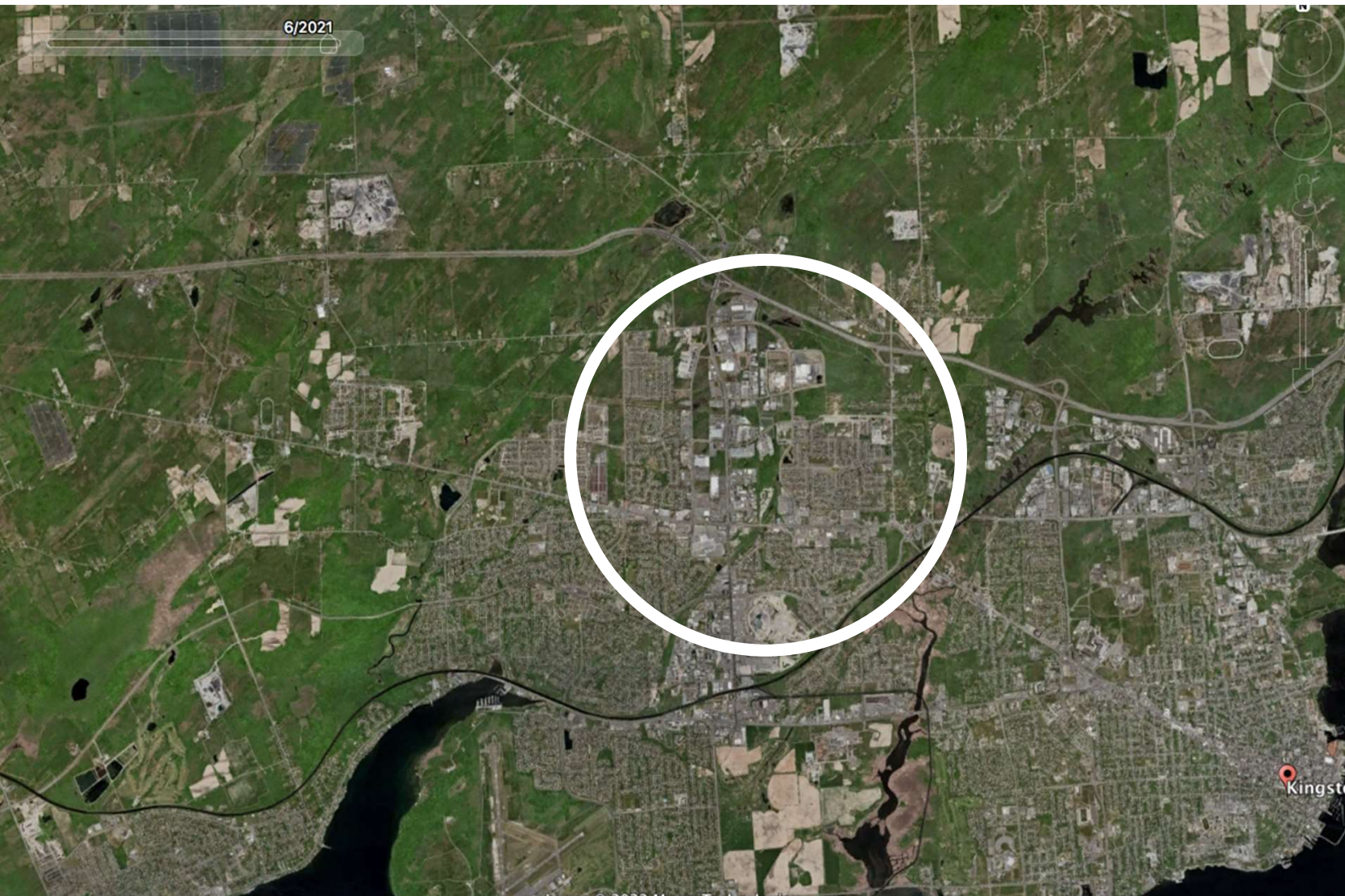
All of the images in the slides are from Google Earth Pro, which can be freely downloaded using this [link](#).



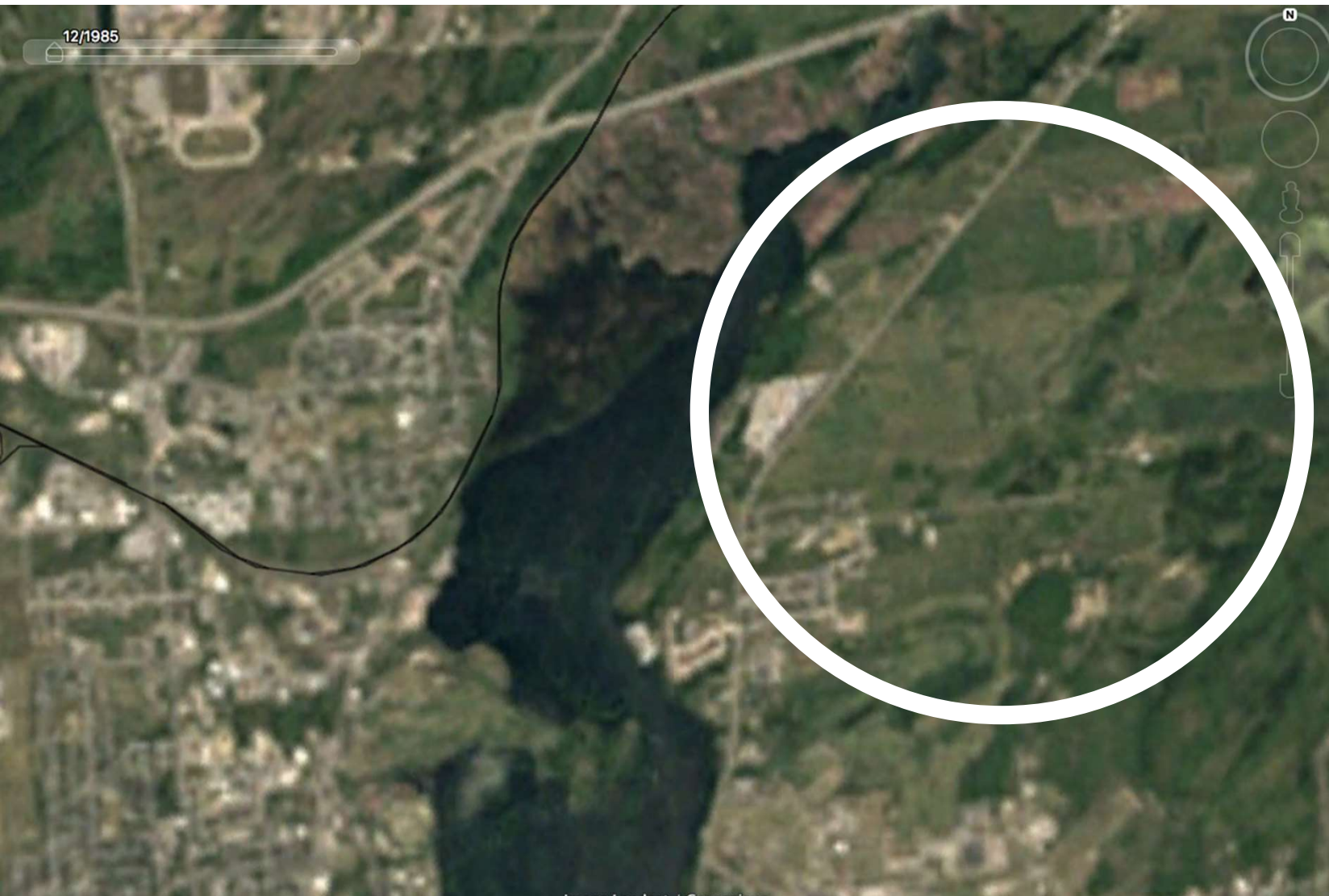
12/1985



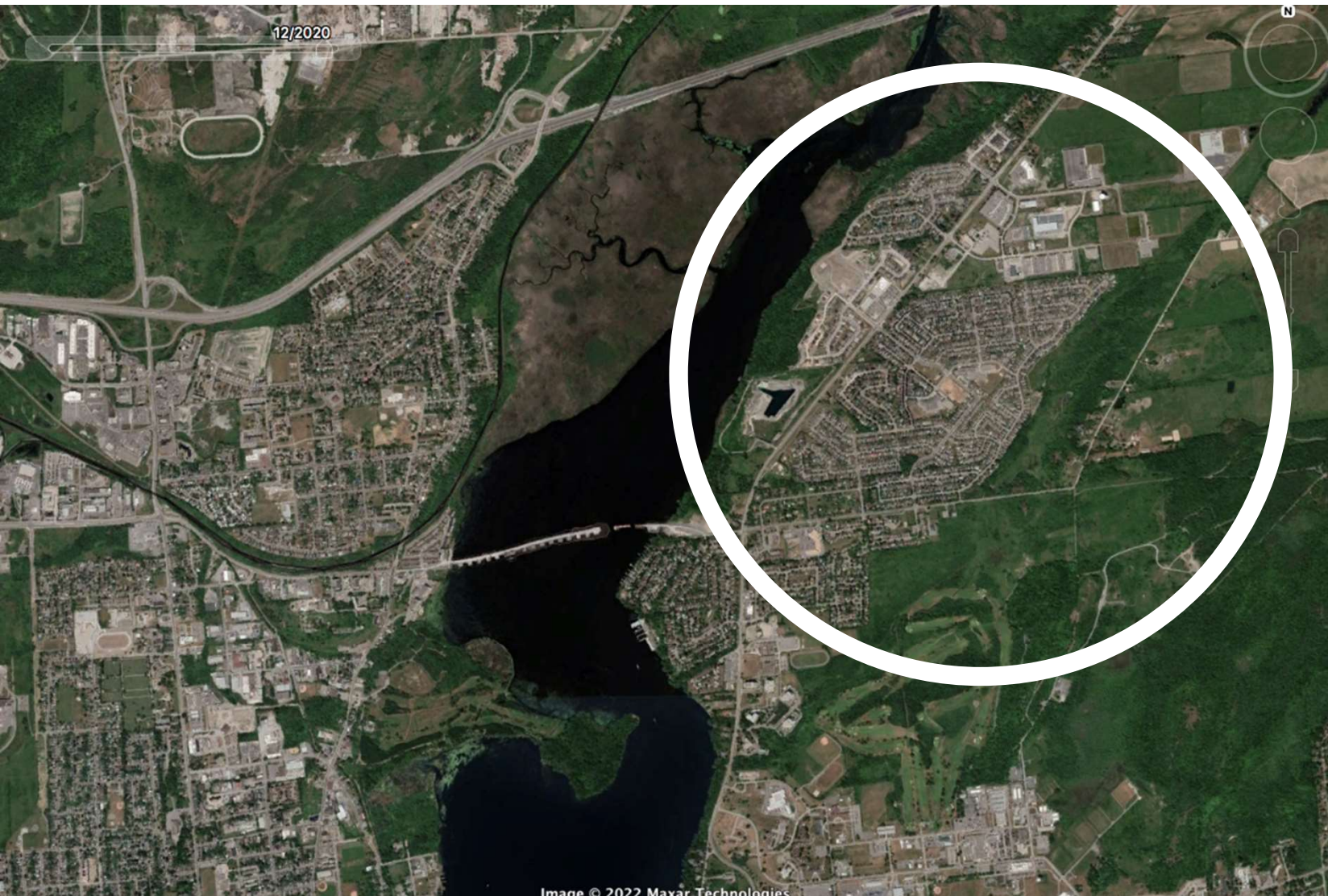
Kingston,
ON (1985).



Kingston,
ON (2021).



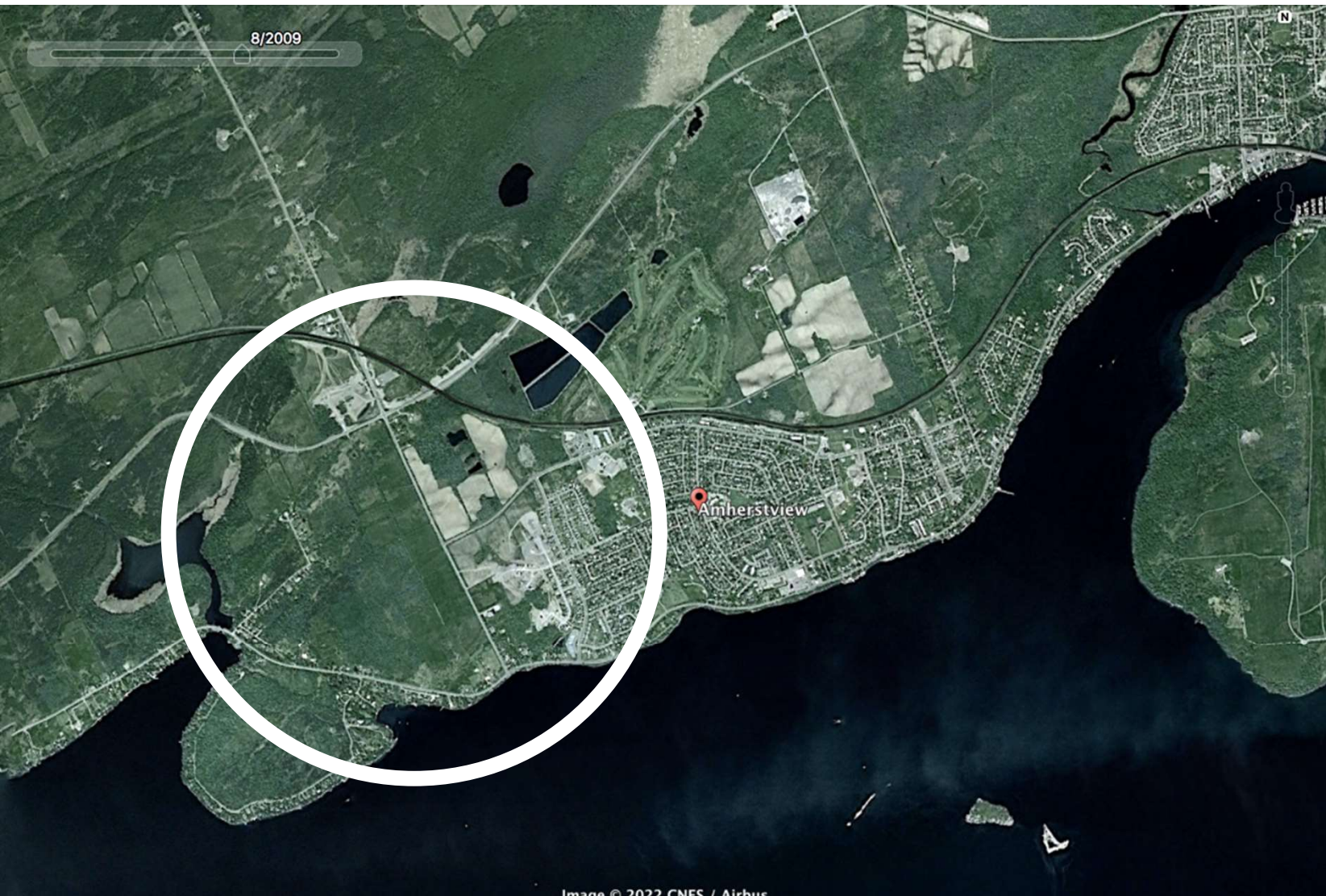
Kingston
NorthEast
End, ON
(1985).



Kingston
NorthEast
End, ON
(2020).



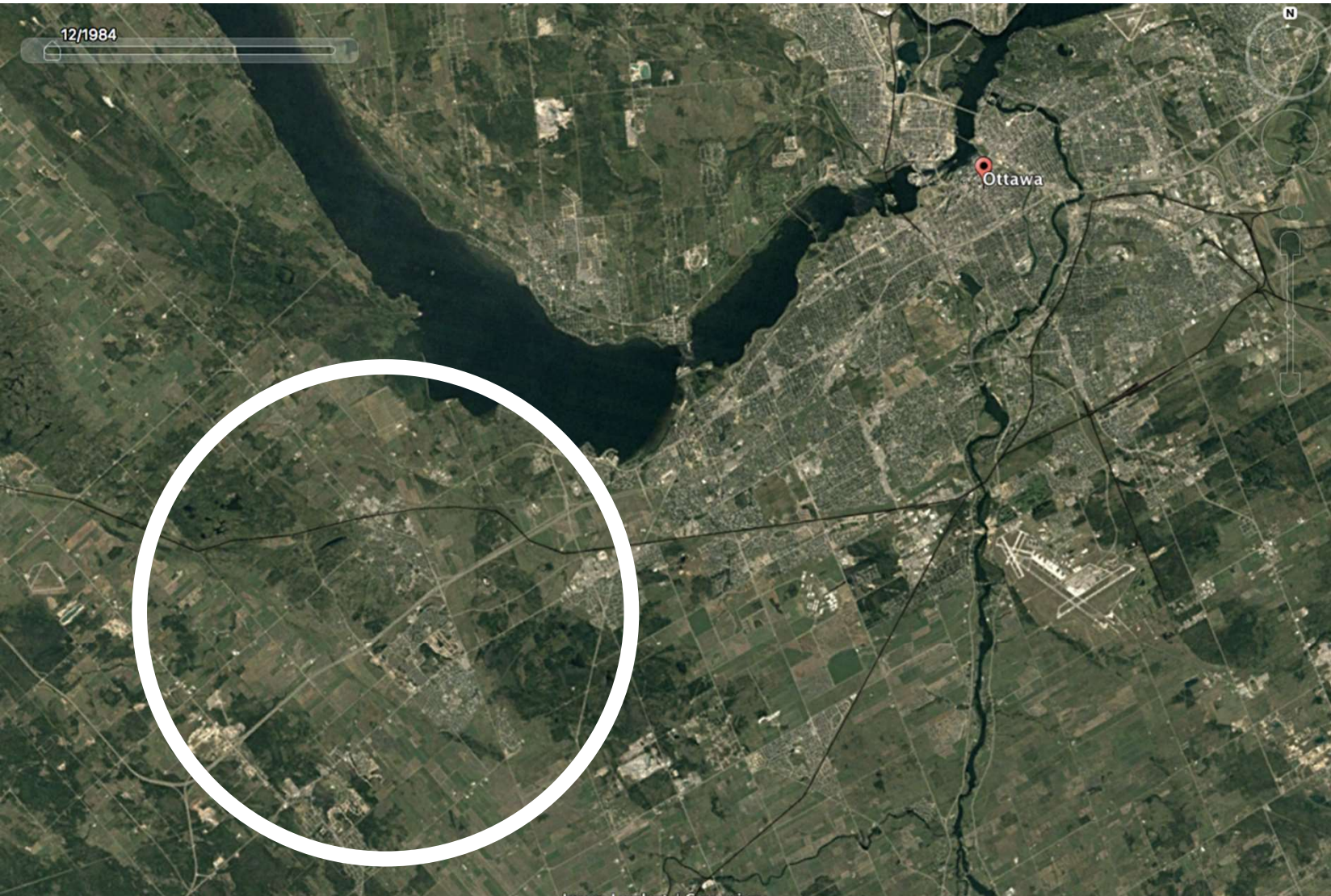
Amherstview,
ON (1985).



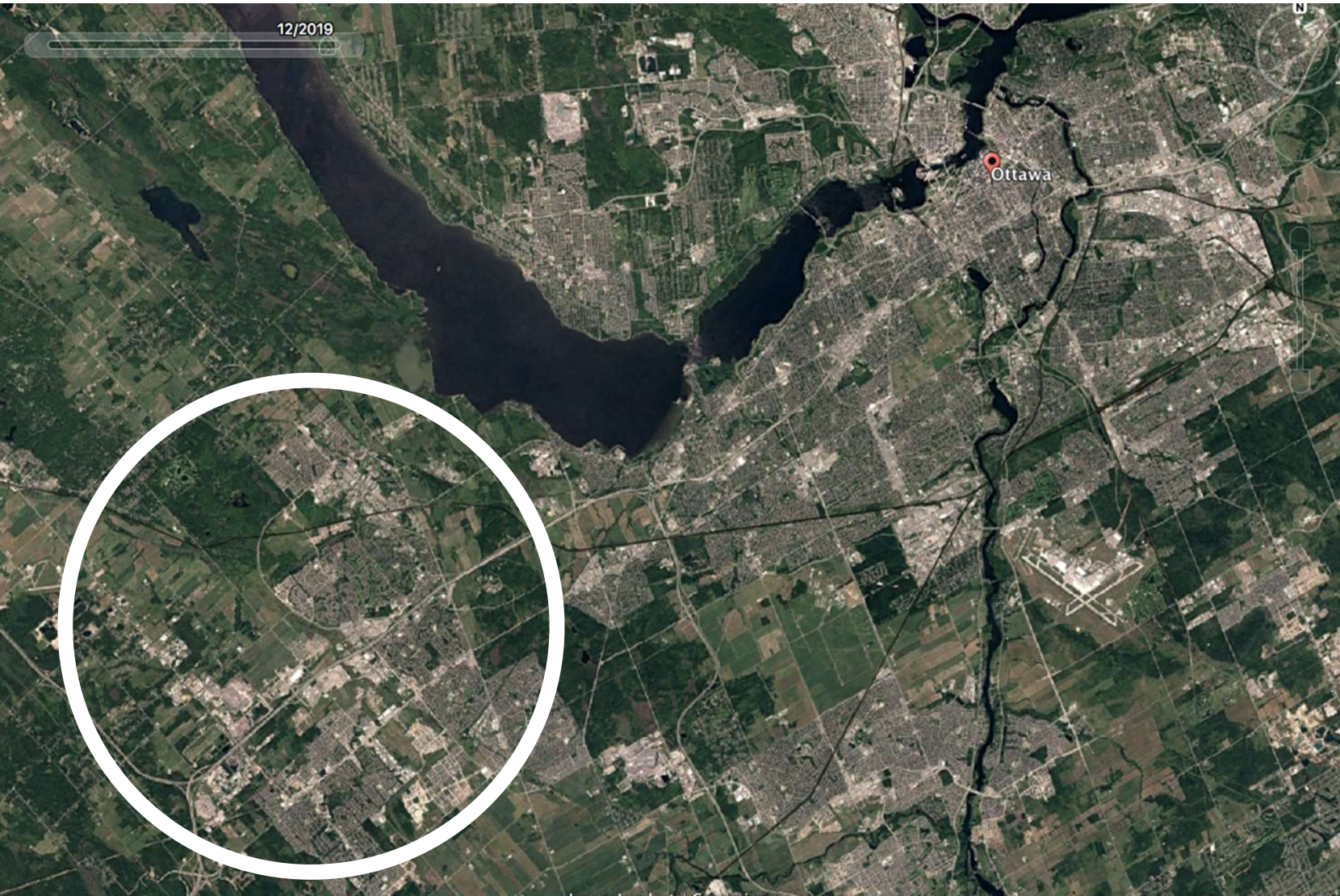
Amherstview,
ON (2009).



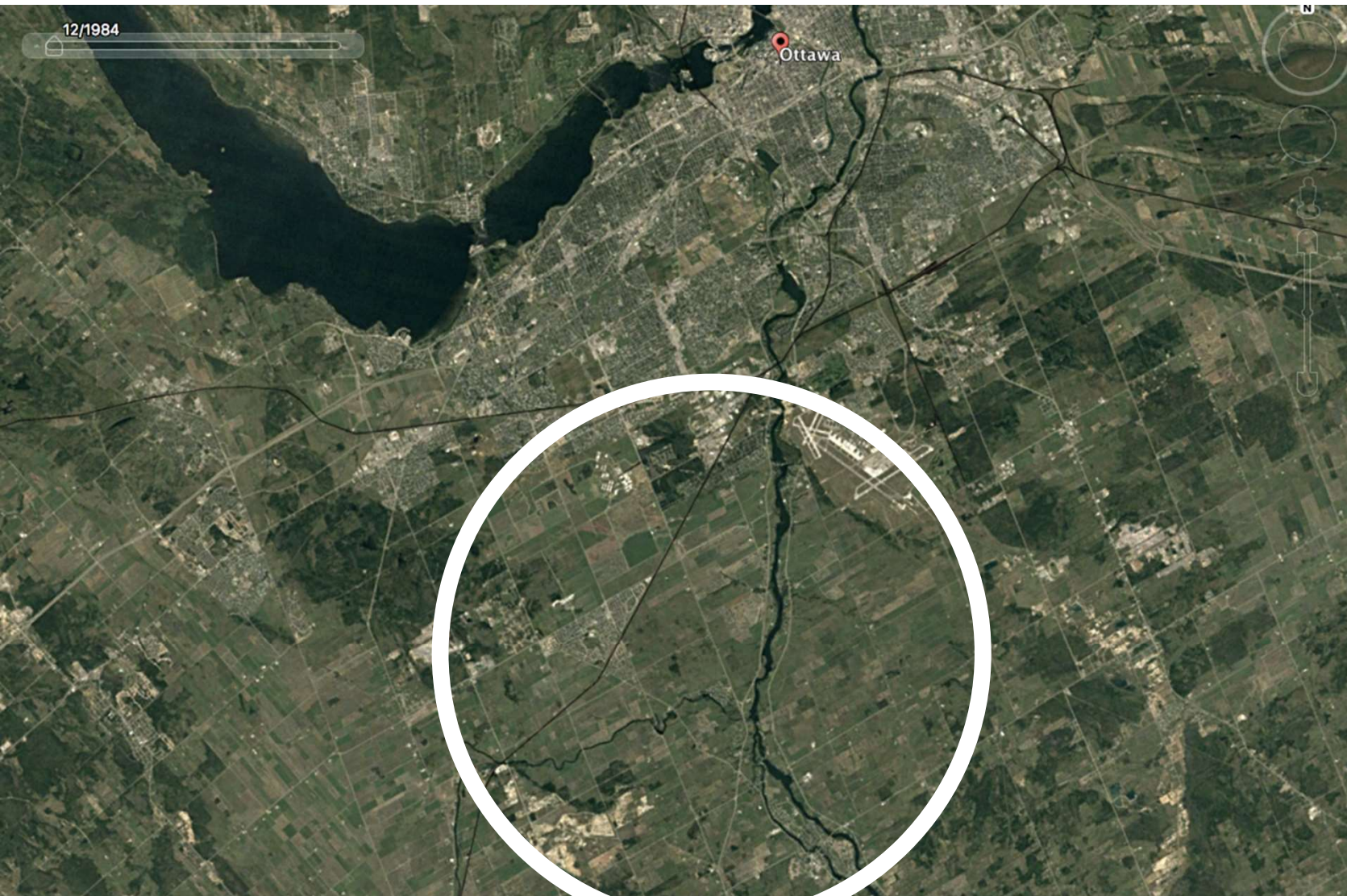
Amherstview,
ON (2022).



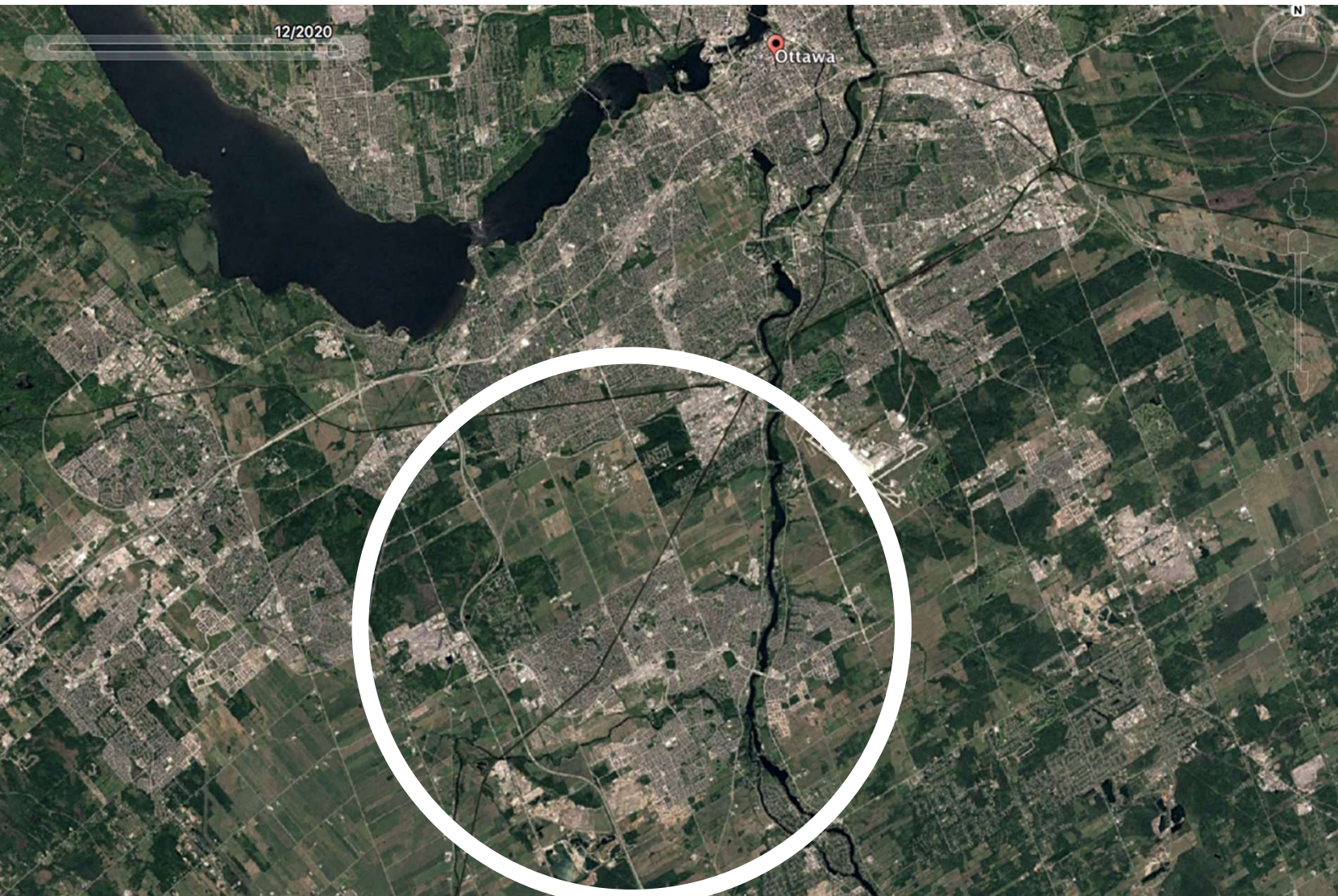
Ottawa,
ON (1984).



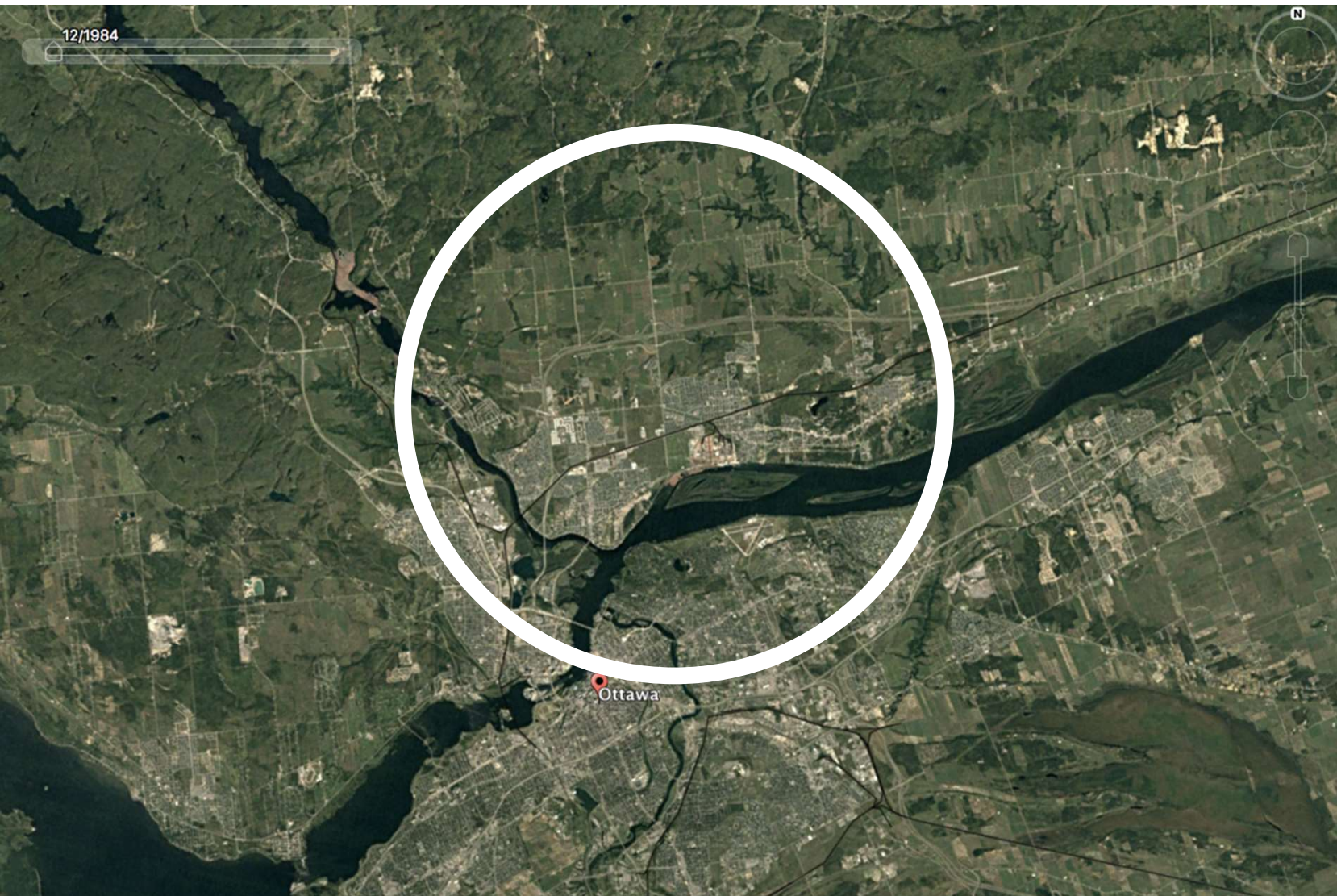
Ottawa,
ON (2019).



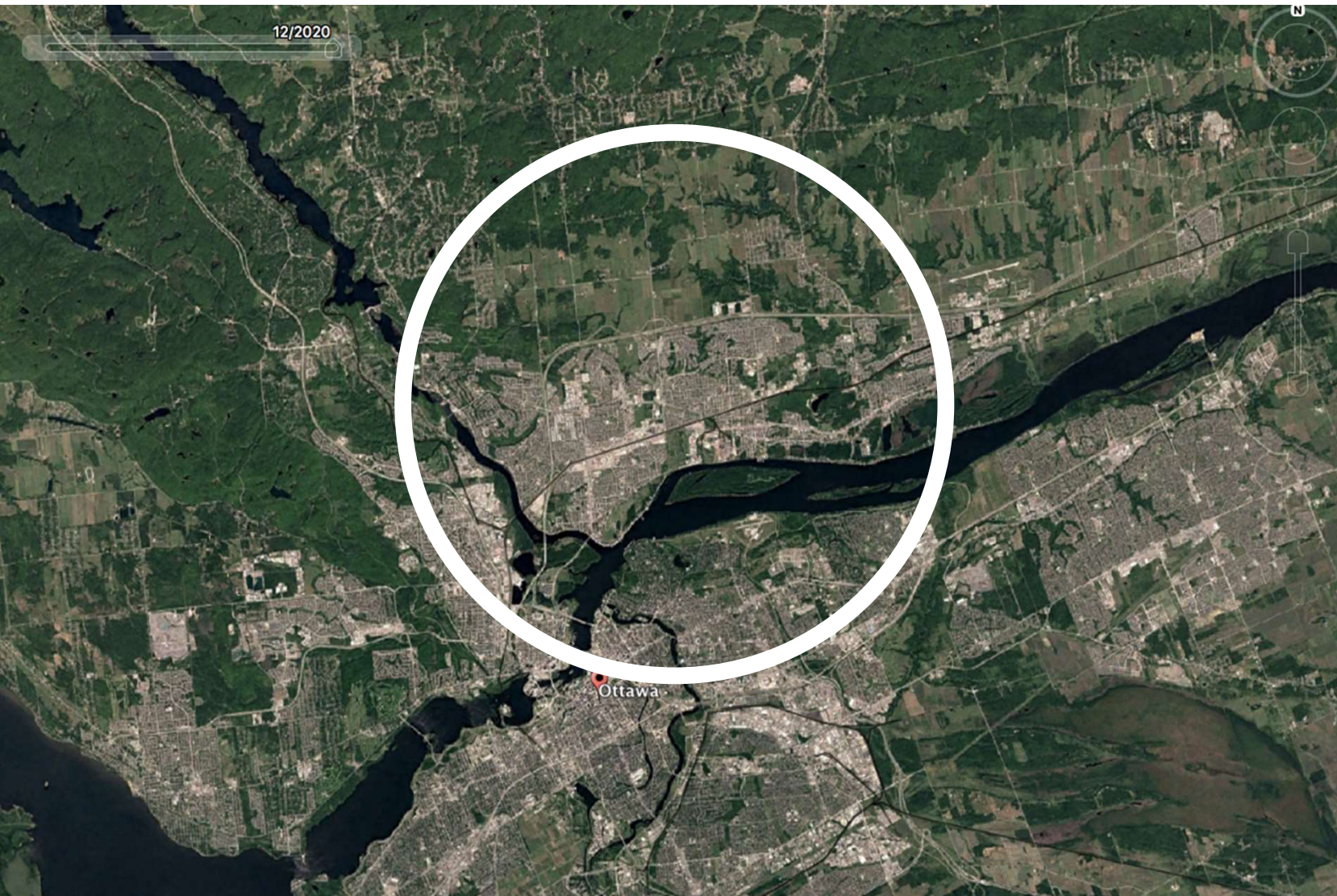
Ottawa,
ON (1984).



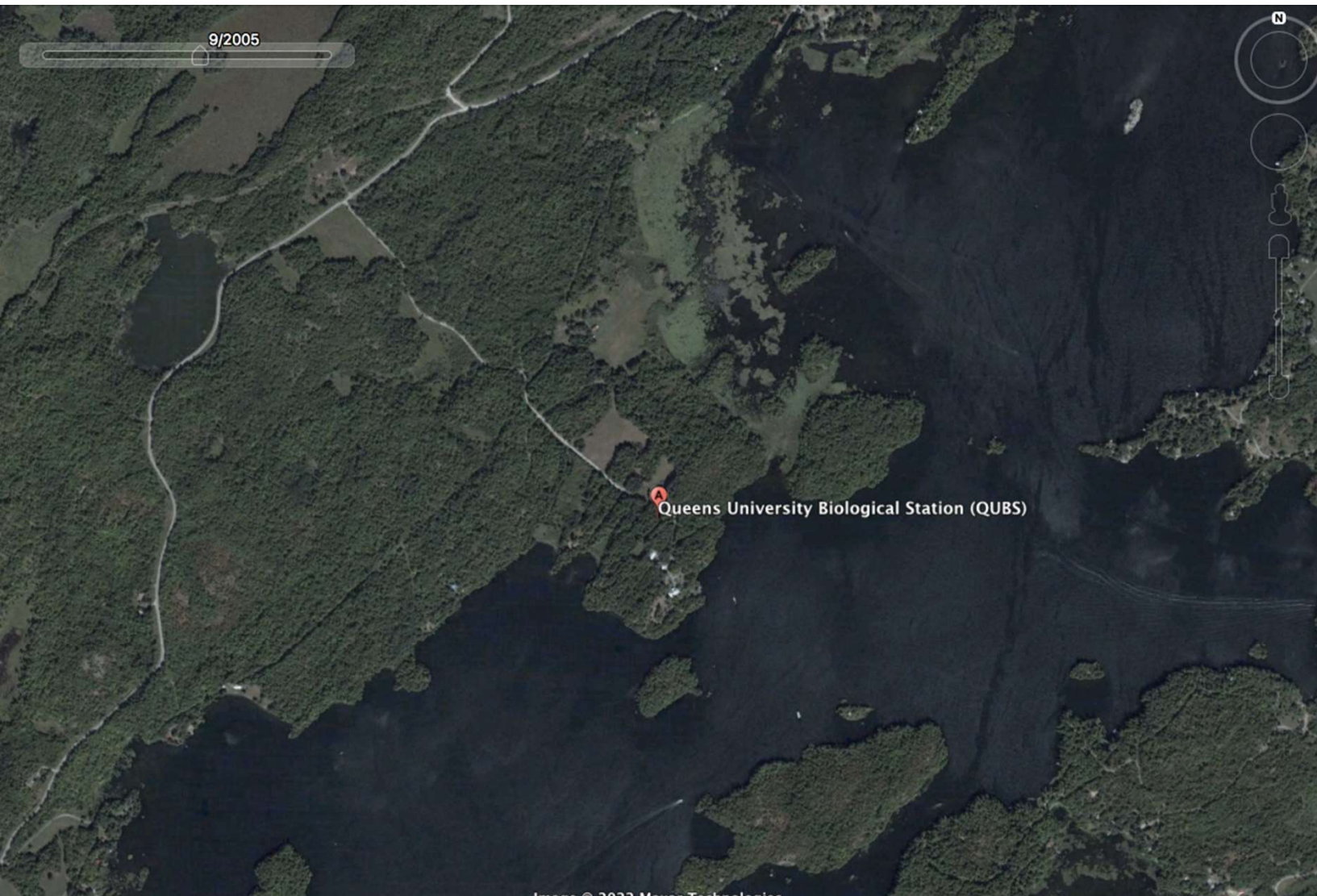
Ottawa,
ON (2020).



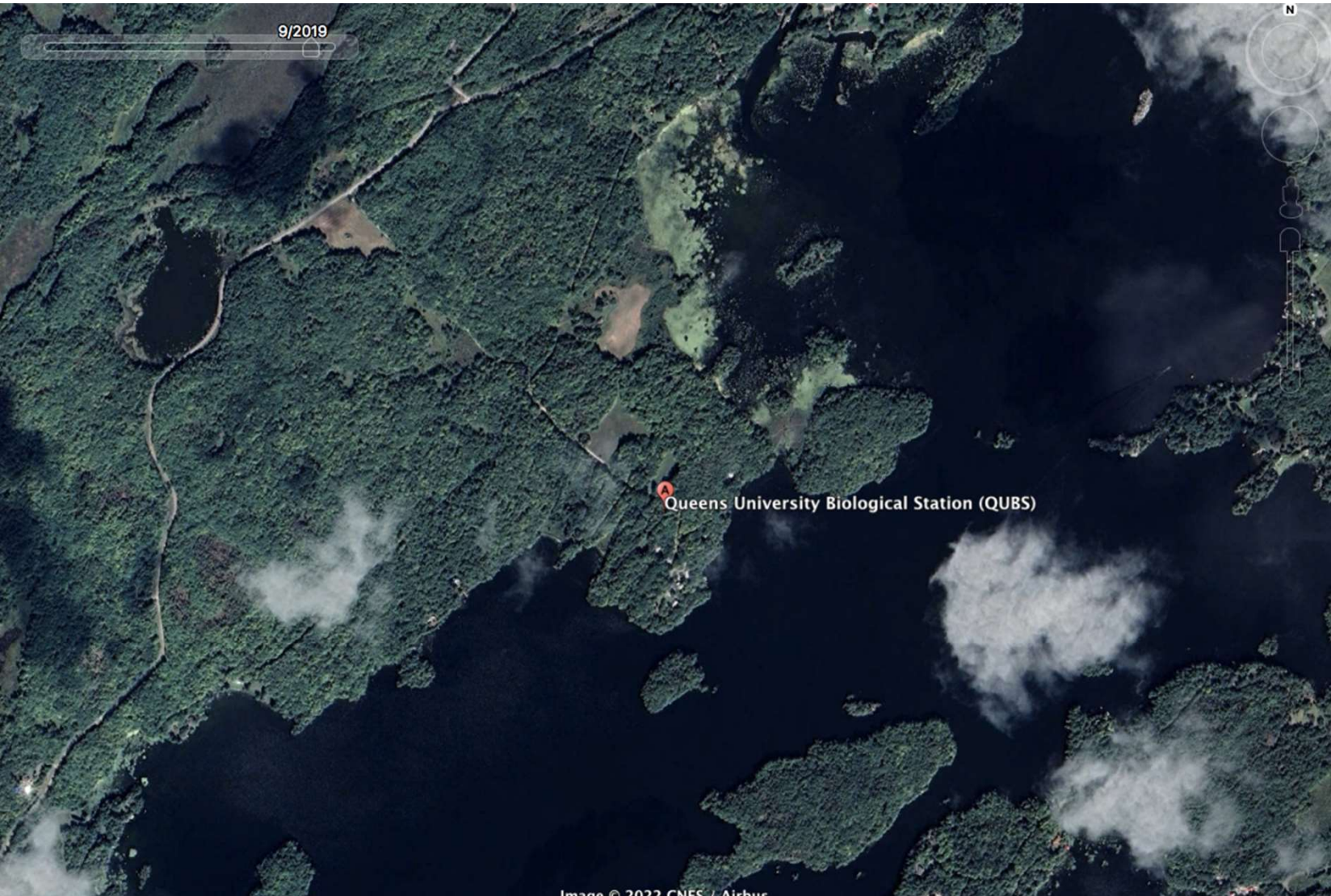
Ottawa,
ON (1984).



Ottawa,
ON (2020).



Queen's
University
Biological
Station,
ON (2005).



Queen's
University
Biological
Station,
ON (2019).



QUILLS

Queen's University Indigenous
Land-Based Learning STEM

Questions to Reflect on:

- What changes did you see throughout the years?
- How might have this development affected natural ecosystems?
- Is there anything different you noticed about the QUBS location?

