



The Impact of Climate Change on Frogs

Name: _____

Date: _____

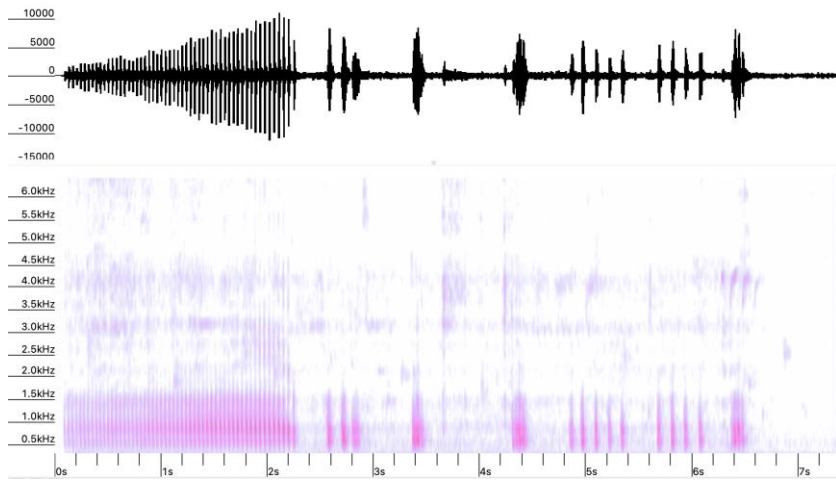
1. Visit [uOttawa NatureWatch Frog Calls on Soundcloud](#)

Below are the frog species along with their approximate audio pictures of their calls. Listen closely to each call, as many times as you need, and match the frog to the audio picture.

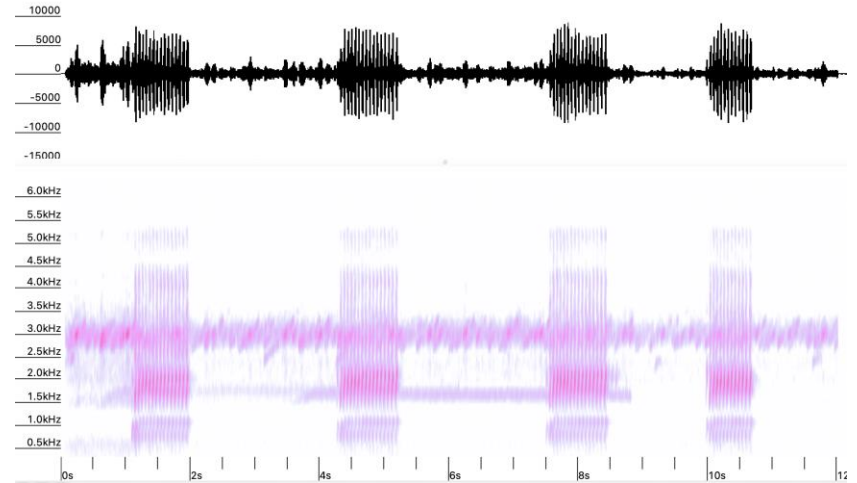
A. Spring Peeper	
B. Wood Frog	
C. Boreal Chorus Frog	
D. Northern Leopard Frog	
E. American Toad	
F. Gray Treefrog	
G. Green Frog	
H. American Bullfrog	
I. Pickerel Frog	
J. Mink Frog	



1.

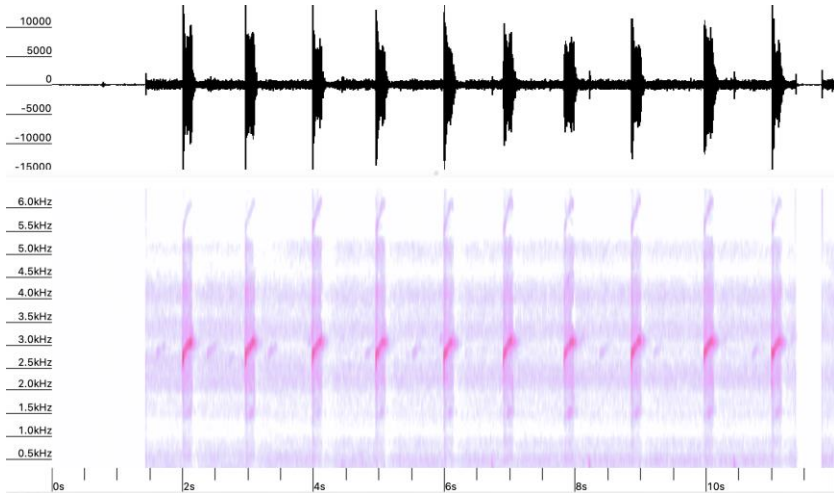


2.

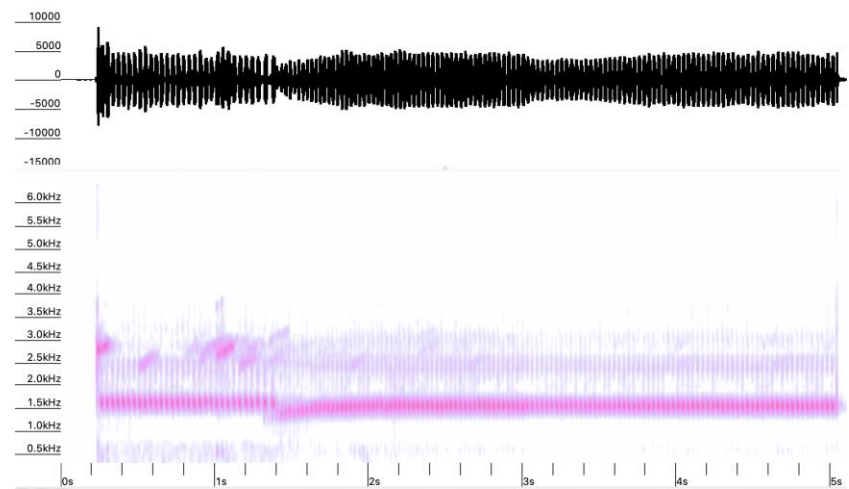




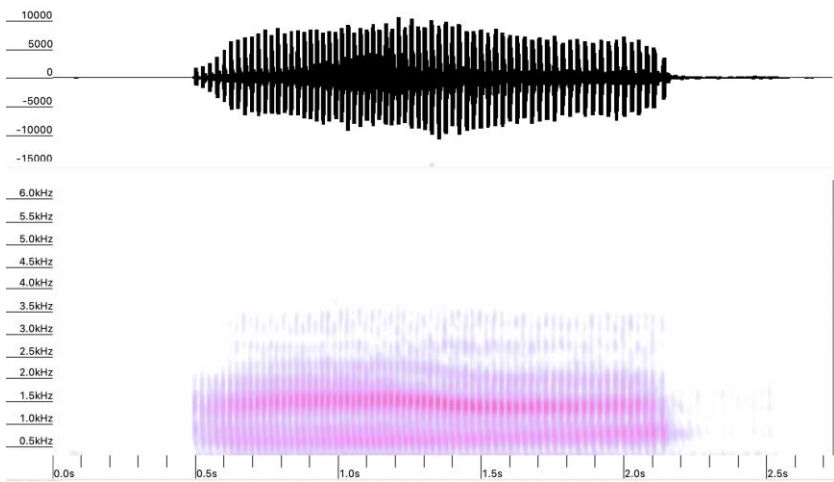
3.



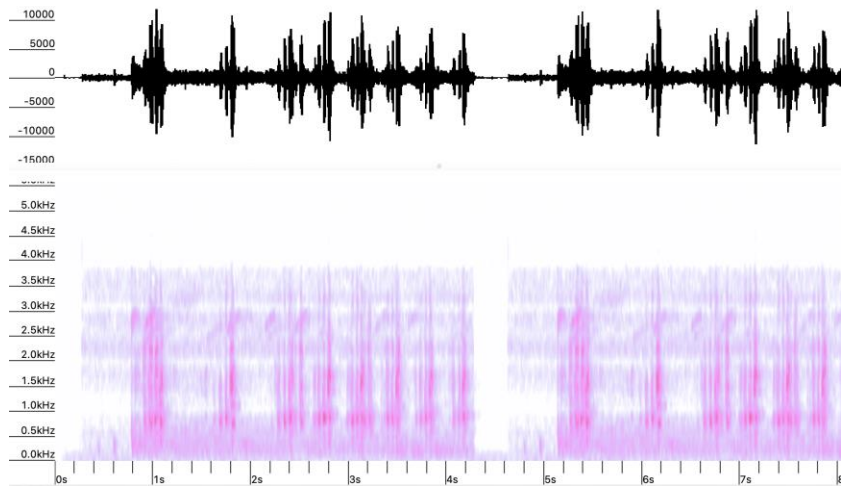
5.



4.

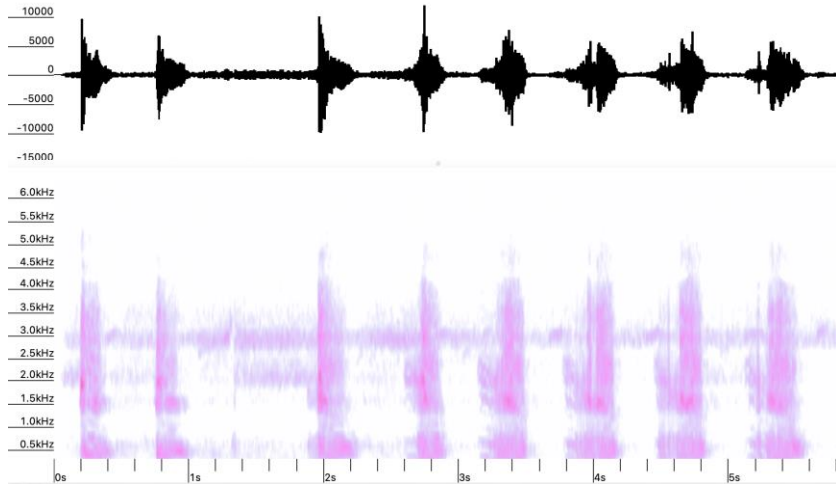


6.

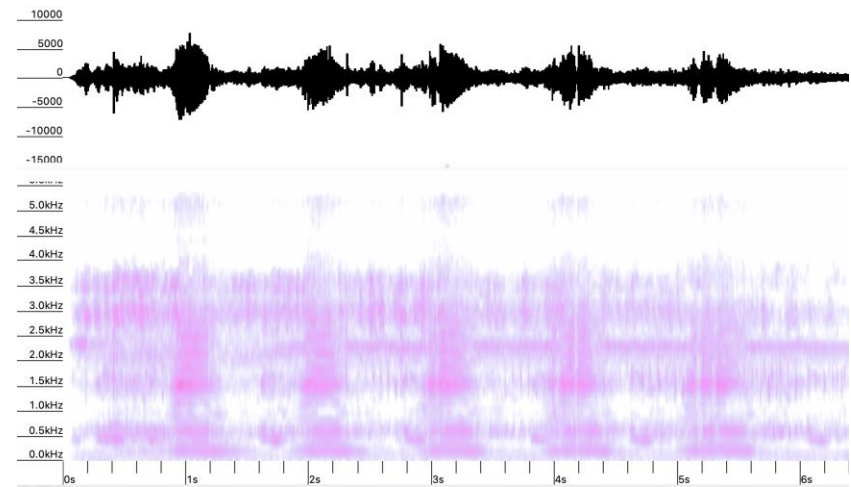




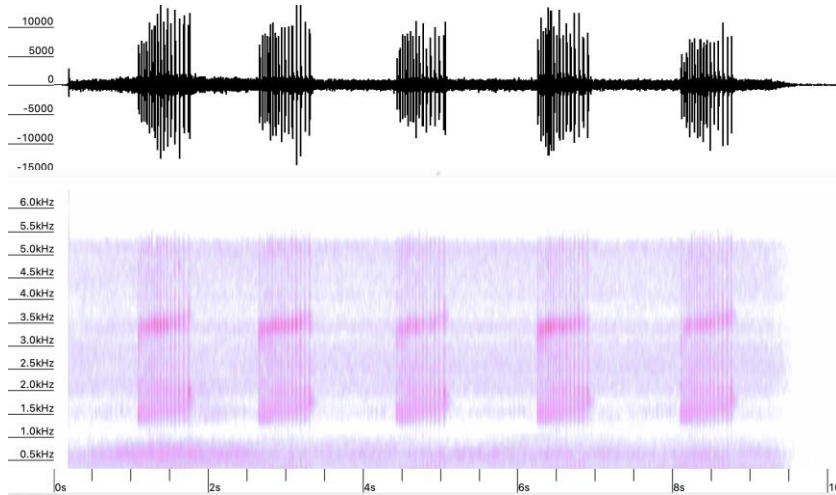
7.



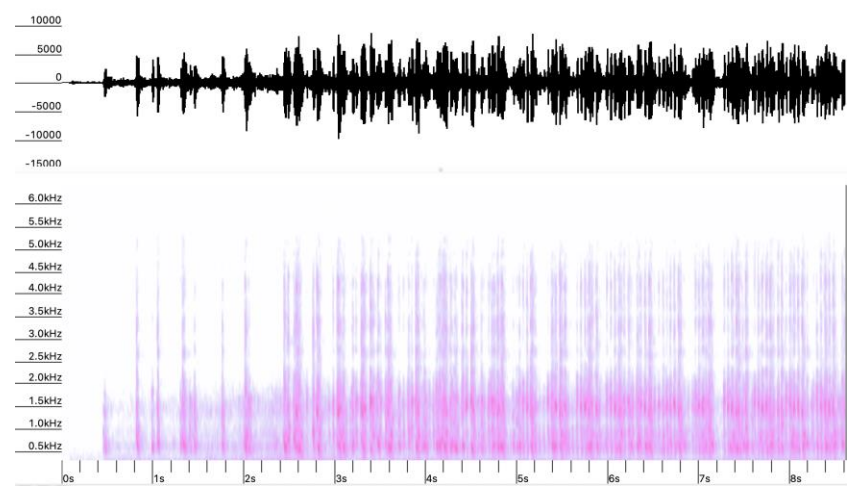
9.



8.



10.



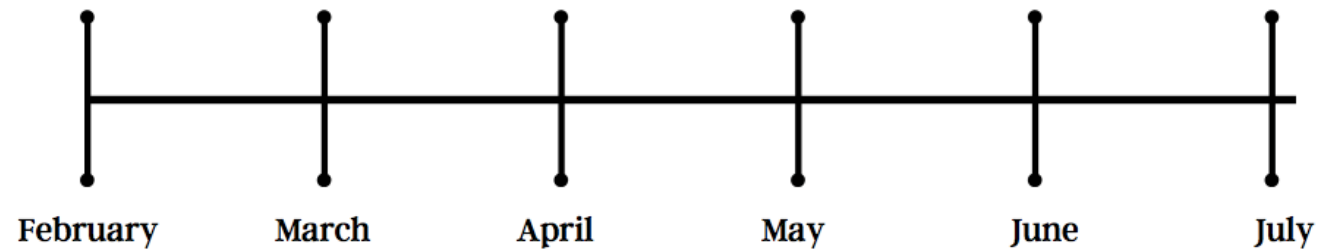


2. Now, we will make a visual depiction of the data from the study (excluding the Pickerel and Mink frogs). This timeline will help us see how some of the frogs changed their calling behaviour due to climate change and warmer temperatures.

Using the chart on the infographic, label the frogs on the seasonal timeline below. Only use the data that relates to the frog calls. Looking at the chart, determine where each frog should be placed on the timeline. If no changes occur after 40 years, they can be placed on the same spot on the "Present" timeline. However, if there were changes after 40 years, make sure to move the frog to its new spot on the timeline.

Chorus Frog	Northern Leopard Frog
Spring Peeper	Wood Frog
Green Frog	American Bullfrog
American Toad	Gray Tree Frog

Past



Present

