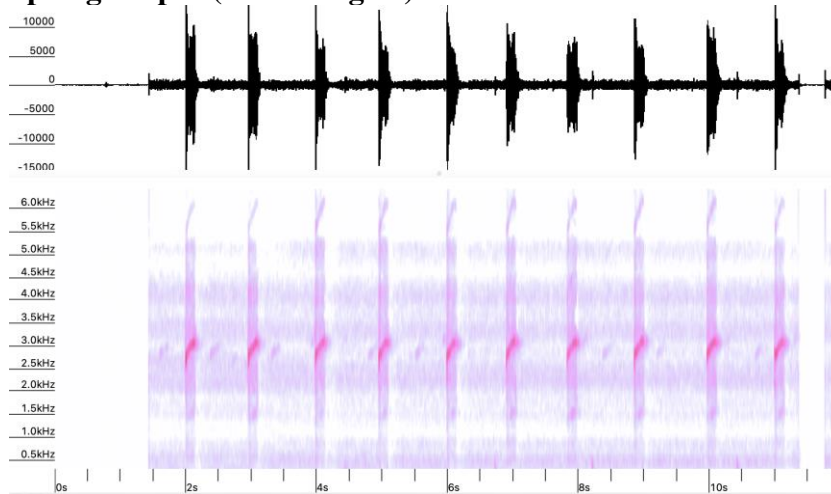


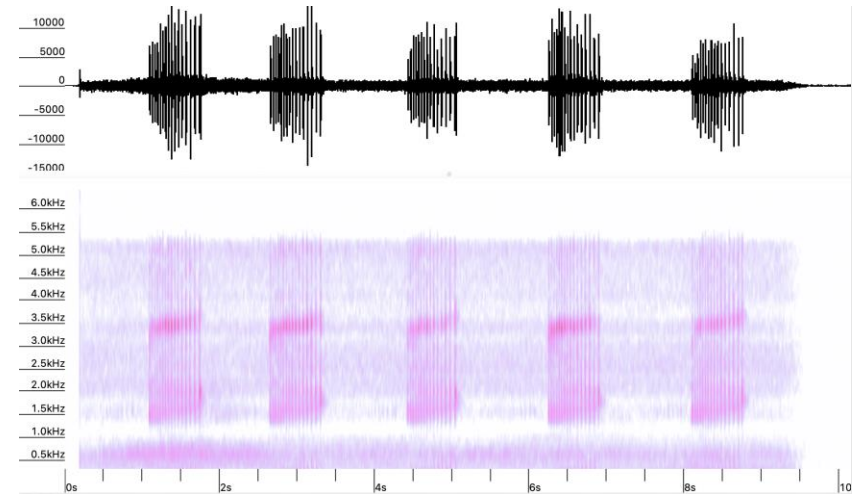


## ANSWER KEY

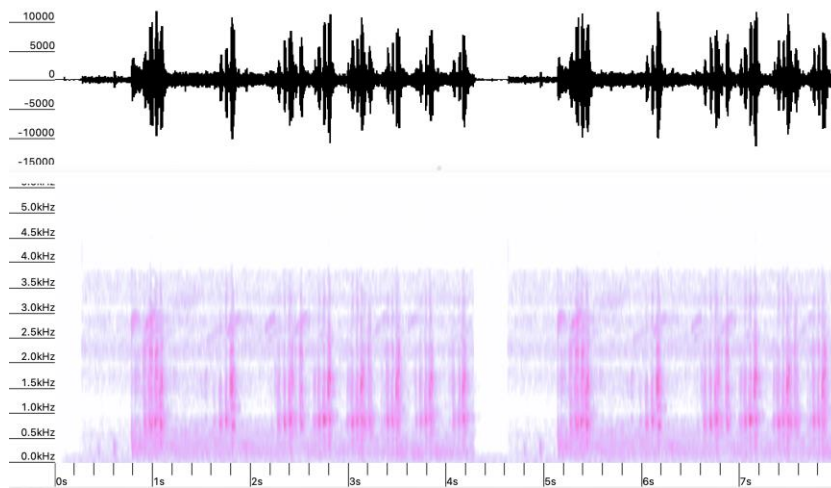
### Spring Peeper (Recording #3)



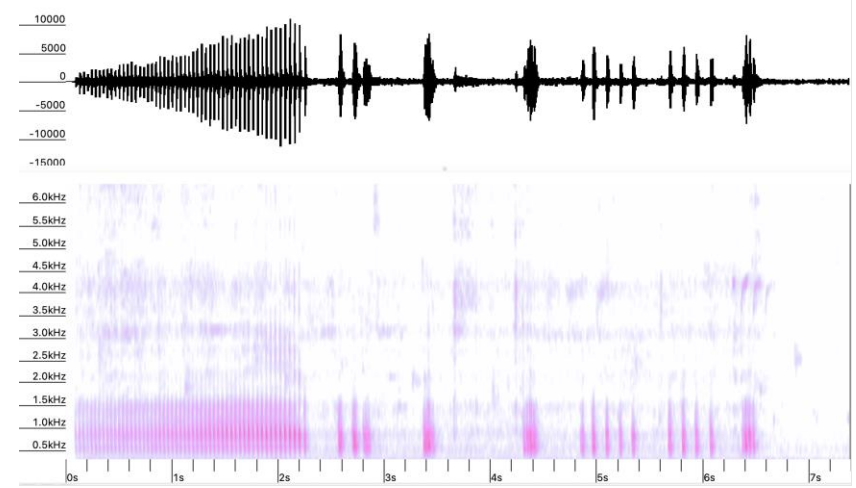
### Boreal Chorus Frog (Recording #8)



### Wood Frog (Recording #6)

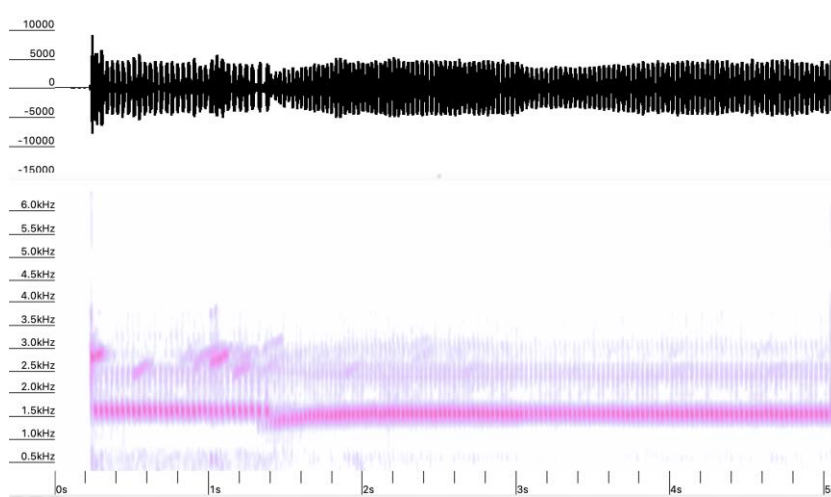


### Northern Leopard Frog (Recording #1)

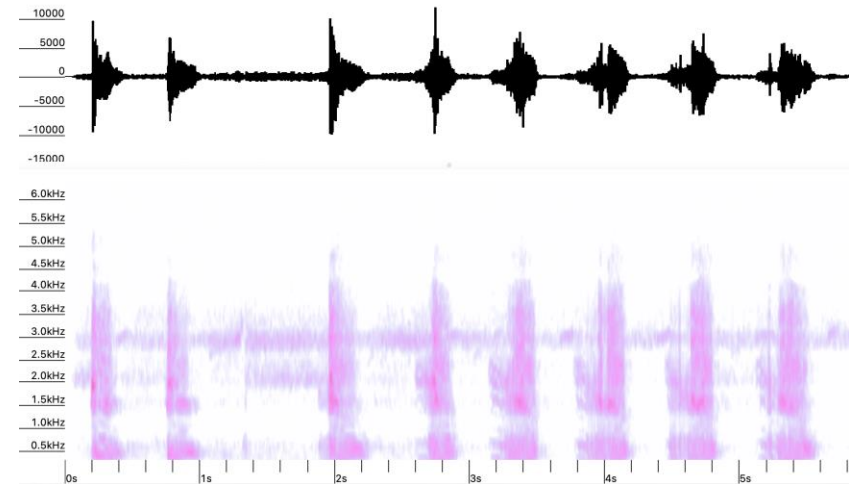




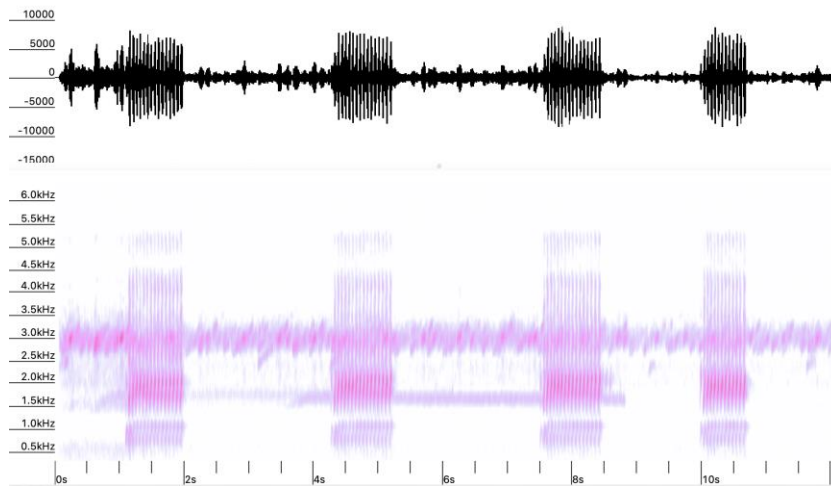
### American Toad (Recording #5)



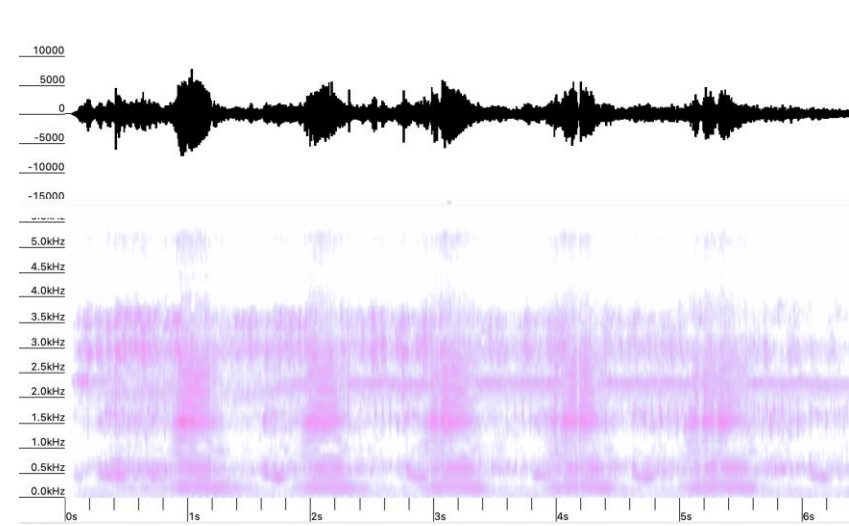
### Green Frog (Recording #7)



### Gray Tree Frog (Recording #2)

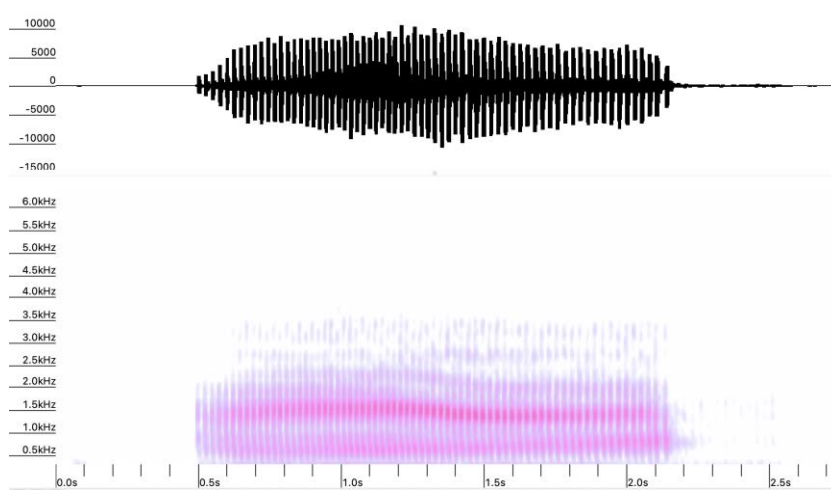


### American Bull Frog (Recording #9)

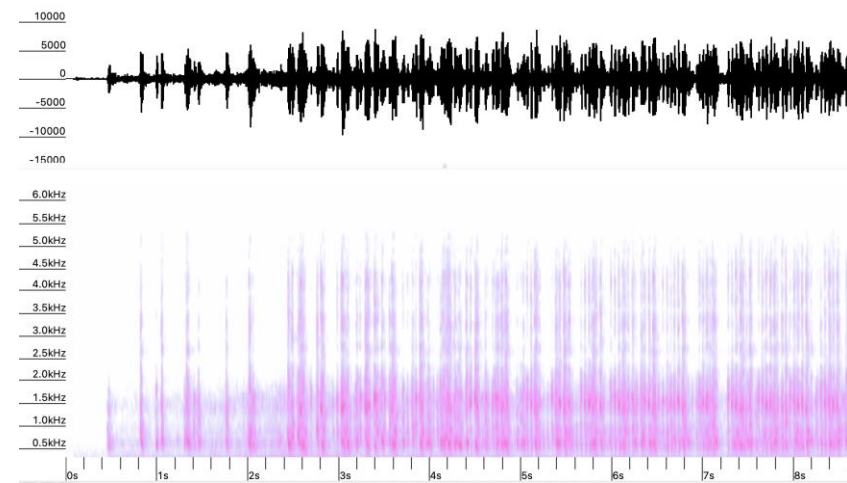




**Pickerel Frog (Recording #4)**



**Mink Frog (Recording #10)**

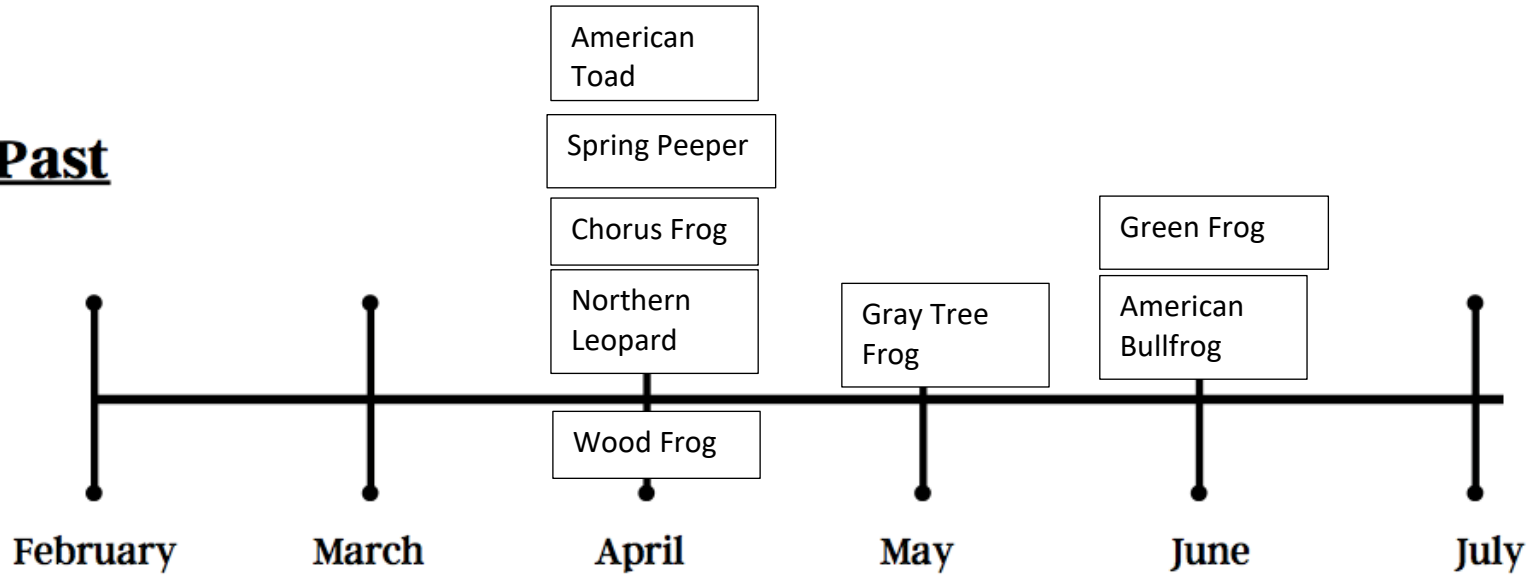


**Matching Answers:**

Frog Species	Call/ Audio Picture
<b>A.</b> Spring Peeper	3
<b>B.</b> Wood Frog	6
<b>C.</b> Boreal Chorus Frog	8
<b>D.</b> Northern Leopard Frog	1
<b>E.</b> American Toad	5
<b>F.</b> Gray Treefrog	2
<b>G.</b> Green Frog	7
<b>H.</b> American Bullfrog	9
<b>I.</b> Pickerel Frog	4
<b>J.</b> Mink Frog	10



**Past**



**Present**

