

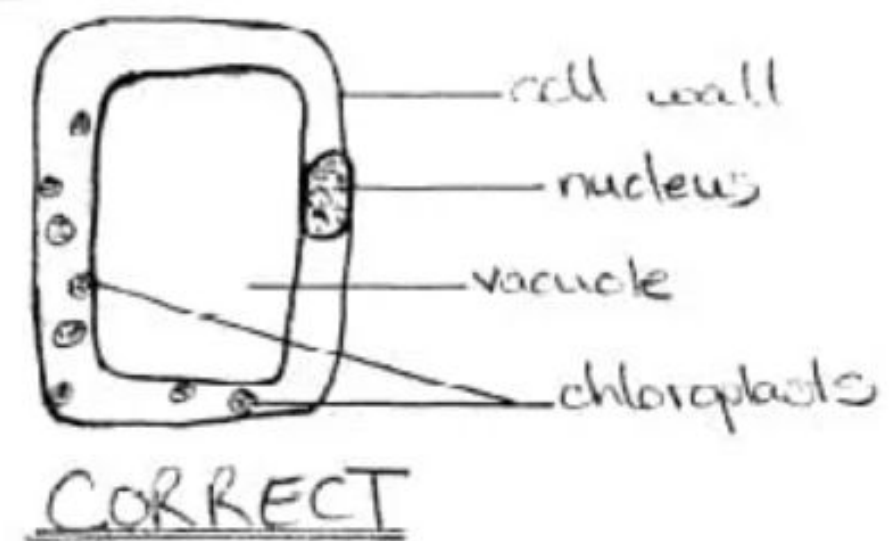
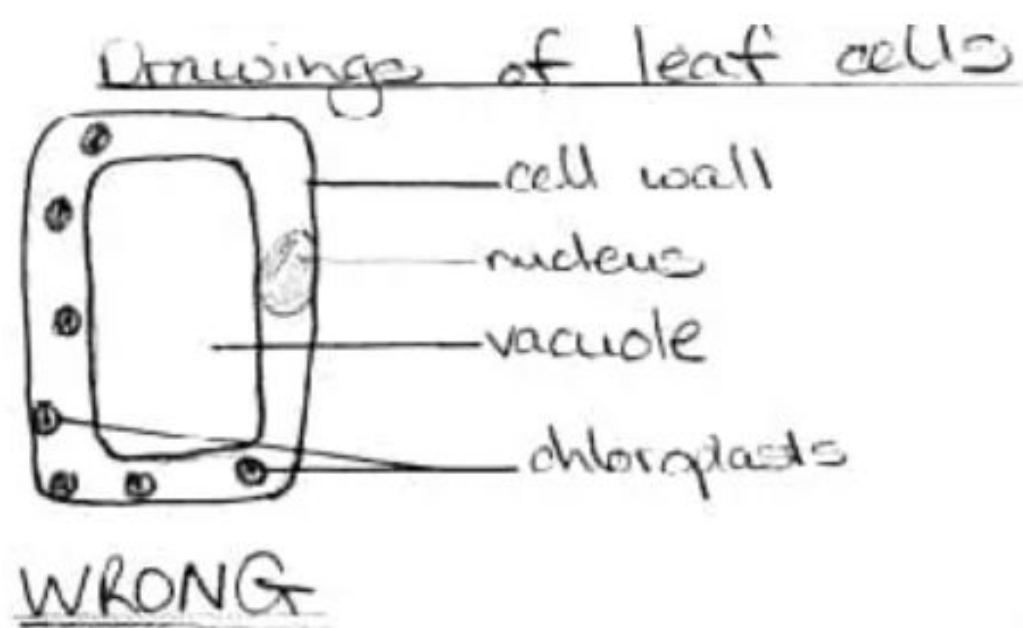
# Scientific Drawings of Plants



Good scientific drawings do not require a high level of artistic ability, they just need to be clear and accurate

## Necessary Components of Your Drawing:

- 1) title
- 2) Scale
- 3) Labels with a single line connecting to part
- 4) underline all scientific terms



## Rules for Creating a Scientific Drawing

- 1) Draw only what you see, not what you think you see
- 2) Draw in pencil
- 3) Make drawings large and clear so features can be easily distinguished
- 4) Use single, distinct lines. Do not shade.
- 5) If you need to illustrate dark areas, use stippling or dots instead of shading

